



# GET THE DREAM LOOK YOU DESERVE

GENDER REASSIGNMENT  
FEMALE TO MALE



#rediscoveryourself



## YOUR DOCTOR

**DR. SALIL PATIL ,**  
**M.CH. (PLASTIC AND RECONSTRUCTIVE SURGERY)**



**FELLOW, ADVANCED COSMETIC SURGERY (FACS)**



**FELLOW, LASER AND COSMETIC DERMATOLOGY**



**CONSULTANT PLASTIC, COSMETIC AND LASER SURGEON**

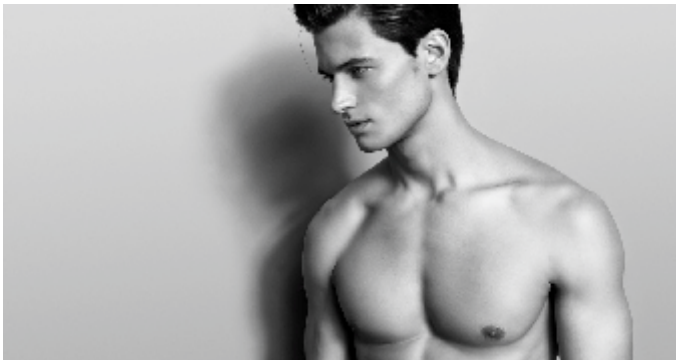


**DIRECTOR, DHANWANTARIS CHRYSALIS**

**Dr. Salil Patil, Pune** is an Indian Board Certified Cosmetic Surgeon, gold medalist and Director at **Dhanwantari's Chrysalis**. He is the most Trusted and Respected name in Cosmetic Surgery, Hair, Skin and Laser. He has practiced with Indian and Overseas patients with innumerable Successful Surgeries to his credit. He is a very humble human being and keeps a very simple and comfortable approach to the patients.

Here at Dhanwantari's Chrysalis each patient receives personalized attention and makes an informed decision after extensive counseling with full knowledge of the procedures as well as alternative treatments. Dhanwantari's Chrysalis is performing at its best with Advanced instrumentation, state of the art operative and OPD equipment as well as experienced qualified and expert Plastic surgeon, ably backed by a well trained and experienced staff.

Apart from these best medical standards, Patients find benefits in their lives in many aspects with much improved, physical and mental health.



# GENDER REASSIGNMENT

## FEMALE TO MALE

### What is Sex Reassignment ?

Sex reassignment surgery is a collection of surgical procedures which are commonly termed as 'sex change'. Sex reassignment surgery or SRS (also known as gender reassignment surgery, gender confirmation surgery, genital reconstruction surgery, gender-affirming surgery, or sex realignment surgery) is the surgical procedure (or procedures) by which a transgender person's physical appearance and function of their existing sexual characteristics are altered to resemble that socially associated with their identified gender. The major reason behind undergoing this surgery is the gender identity disorder in which a biologically born man/woman identifies himself/herself as opposite gender. It is part of a treatment for gender dysphoria in transgender people. In order to deal with psychological and physical issues related to the problem, Sex Reassignment surgery is known to provide the desired results.

Sex reassignments (SRS also referred as gender reassignment surgery, gender confirmation surgery, genital reconstruction surgery, gender-affirming surgery, or sex realignment surgery.)

It is also well known to as 'sex change' is a compilation of surgical procedure through which a transgender person's natural appearance and functions of their current existing reproductive characteristics are modified to mirror to that of its socially associated with their determined gender. Often people undergo SRS is due to gender identity disorder in which a person by birth identifies himself/herself as a person of opposite sex.

Gender dysphoria procedure is used to correct this disorder. SRS is a practice widely known to get the desired results to resolve the psychological and physical issues related to such a problem.

American Society of Plastic Surgeons (ASPS) call it Gender Confirmation Surgery or GCS. Other terms for SRS are sex reconstruction surgery. The clinical terms for trans women are feminizing genitoplasty or penectomy, orchiectomy, and vaginoplasty, whereas clinical terms for trans men are masculinizing genitoplasty, metoidioplasty or phalloplasty.

People who wish to undergo sex reassignment surgery are often referred to as transsexual,

The word derived from "trans" meaning "across", "change" or "through" and "sexual" connecting to the sexual characteristics but not natural to the sexual actions of a person.

### **WHO NEEDS IT?/ CANDIDATURE FOR SEX REASSIGNMENT**

#### **Who is the best candidate for SEX REASSIGNMENT SURGERY?**

#### **Who needs Gender Reassignment :**

Marked incongruence between the member's experienced/expressed gender and assigned gender and has experienced the following :

The person is willing to participate in an identified gender identity treatment program.

The person desires to live and be acknowledged as a person of the opposite sex, generally, lead by the wish his/her body compatible with the preferred sex by surgery and hormone treatment. The transsexual identity has been constant for at least 2 years. The disorder is not being any kind of a symptom of any type of disorder. The person is well aware of the cost involved, hospitalizations required, the complications which may likely to occur, post-surgical rehabilitation which are required for multiple surgical approaches.

The person should also have obtained the appropriate letters of referral noted in Referral Letters section.

The individual must be above 18 years of age.

The individual should undergo a hormone therapy and or antiandrogens for at least a Year .

The individual should be diagnosed with gender dysphoria, gender identity disorder, anxiety/depression related to the problem or disorders.

There should be an approval letter from qualified psychiatrist a clinical psychologist.

### **Who is the Best Gender Reassignment Candidate ?**

The experience of being transsexual comprise of the complete identity of an individual. It's a bid to disguise of their identity, live a lie which is unusual/unnatural to live up to others expectations, the masking inspired by a circuitous sense of shame and self-hatred till it turns into an experience which makes one suffocated or frustrated. Transsexuals find it extremely difficult to justify as to why they want to alter their gender and take years to mask themselves to "pass" their sex in which society will accept them. Their capability to function socially, emotionally, physically, spiritually, economically and sexually is lowered and end up mostly suicidal in most cases. This continuously results in a complete emotional collapse later in adulthood.

"Gender Dysphoria" is the name for this condition, and treatment follows the standards of care established by the World Professional Association of Transgender Health (WPATH, formerly HBGDA), which includes GRS.

This is generally known as "Gender Dysphoria" and the standards of care established by the World Professional Association of Transgender Health (WPATH, formerly HBGDA), which includes GRS is followed in the treatment

Gender Identity Disorder (GID) is defined in the American Psychiatric Diagnostic and Statistical Manual of Mental Disorders-IV (DSM-IV),<sup>25</sup> which lists five necessary criteria:

1. A strong and persistent cross-gender identification evidence.
2. Cross-gender identification should be in surplus than a sheer desire for the anticipated cultural advantages of the other sex;
3. There must be the existence of evidence of either constant discomfort or a feeling of unsuitableness in the gender's role of his/her assigned sex.
4. The person should not have a parallel physical intersex condition; and



5. There must exist evidence of clinically significant distress or impairment in social, occupational, and other areas of functioning.

Individuals diagnosed with GID often suffer through gender dysphoria. Gender dysphoria may lead to severe depression and even make the victim to commit suicide in some cases. A recommendation of triadic therapy is suggested by transgender healthcare expert, which involves a real-life experience in the desired gender role, hormone therapy, and SRS.

### **Eligibility to undergo a SEX REASSIGNMENT SURGERY :**

**Any of the above mentioned reasons makes you a suitable candidate to undergo SEX REASSIGNMENT SURGERY, But to be an eligible candidate for surgery you should also fulfill the following criteria :**

Every surgical procedure including plastic or cosmetic surgery involves certain risks. You should undergo a SEX REASSIGNMENT SURGERY only if you have a medical requirement or you feel that the particular surgery will enhance your quality of life.

You shall be a good candidate for the SEX REASSIGNMENT SURGERY if you are healthy, you have realistic expectations from the outcome of the surgery and you are aware of all the risks associated with the procedure.

You cannot consider undergoing a cosmetic surgery if you have serious health issues like diabetes, heart diseases, high blood pressure, bleeding disorders like haemophilia or depression.

You shall not be a good candidate for the SEX REASSIGNMENT SURGERY if you smoke or drink too much alcohol.

You should have positive attitude!

Your expectations from the outcome of the surgery should be realistic.

You should be ready to miss at least a few weeks of normal activity.

### **Eligibility to undergo a SEX REASSIGNMENT SURGERY :**

**Any of the above mentioned reasons makes you a suitable candidate to undergo SEX REASSIGNMENT SURGERY, But to be an eligible candidate for surgery you should also fulfill the following criteria :**

Every surgical procedure including plastic or cosmetic surgery involves certain risks. You should undergo a SEX REASSIGNMENT SURGERY only if you have a medical requirement or you feel that the particular surgery will enhance your quality of life.

You shall be a good candidate for the SEX REASSIGNMENT SURGERY if you are healthy, you have realistic expectations from the outcome of the surgery and you are aware of all the risks associated with the procedure.

You cannot consider undergoing a cosmetic surgery if you have serious health issues like diabetes, heart diseases, high blood pressure, bleeding disorders like haemophilia or depression.

You shall not be a good candidate for the SEX REASSIGNMENT SURGERY if you smoke or drink too much alcohol.

You should have positive attitude!

Your expectations from the outcome of the surgery should be realistic.

You should be ready to miss at least a few weeks of normal activity.

### **Sex Reassignment Surgery Procedure**

**In case of gender reassignment is Female to Male, your surgeon may discuss following surgeries with you - Face and Neck Surgeries**

#### **Brow Lowering**

Brow –lowering procedure can be connected with forehead procedure to :

Eliminate an outstanding brow ridge,

Include an implant to recontour sloping forehead, or

Relocate the hairline to make the forehead to look longer and shorter.

#### **Forehead Augmentation**

Forehead recontouring can take the shape of:

Eliminate an outstanding brow ridge,

Include an implant to recontour sloping forehead, or

Relocate the hairline to make the forehead to look longer and shorter.

#### **Cheekbone Enhancement**

The facial implant is a type of cosmetic surgery designed to correct facial contours.

Implants are infused in areas of the face to make the face appear more balanced in facial features and its aesthetic appearance. Implants are generally made of synthetic material. Facial implants are used to upgrade facial contours. Common areas where implants are infused are the cheeks, chin, and lower jaw.

Example: Cheek implants make the cheeks appear larger, higher and fuller in shape and appearance. Chin implants are specifically for those people who have small chin shape. A patient undergoing nose surgery can also opt for chin implants to make the better facial balance. Jaw implants are used to make the jawline more sharp in appearance.

#### **Nose Masculinization**

The same principles that are applied in any nose surgery can be applied to make the nose either more feminine or more masculine. These procedures require an expert hand and a keen aesthetic eye. The nose is the center of the face and its change can make a striking difference in appearance and self-confidence.

#### **Nose Masculinization**

The same principles that are applied in any nose surgery can be applied to make the nose either more feminine or more masculine. These procedures require an expert hand and a keen aesthetic eye. The nose is the center of the face and its change can make a striking difference in appearance and self-confidence.

### **Jaw Angle enhancement**

The facial implant is a type of cosmetic surgery designed to correct facial contours.

Implants are infused in areas of the face to make the face appear more balanced in facial features and its aesthetic appearance. Implants are generally made of synthetic material.

Facial implants are used to upgrade facial contours. Common areas where implants are infused are the cheeks, chin, and lower jaw.

Example: Cheek implants make the cheeks appear larger, higher and fuller in shape and appearance.

Chin implants a specifically for those people who have small chin shape, A patient undergoing nose surgery can also opt for chin implants to make the better facial balance. Jaw implants are used to make the jawline more sharp in appearance.

### **Chin Enhancement**

The facial implant is a type of cosmetic surgery designed to correct facial contours.Implants are infused in areas of the face to make the face appear more balanced in facial features and its aesthetic appearance. Implants are generally made of human tissues or synthetic material silicon or polythene.

Facial implants are used to upgrade facial contours. Common areas where implants are infused are the cheeks, chin, and lower jaw.

Example: Cheek implants make the cheeks appear larger, higher and fuller in shape and appearance.

Chin implants a specifically for those people who have small chin shape, A patient undergoing nose surgery can also opt for chin implants to make the better facial balance. Jaw implants are used to make the jawline more sharp in appearance.

### **Chest and Abdomen ( Mastectomy )**

Mastectomy implicates removal of the whole breast and the skin overlying the breast. It is the important part of gender reassignment procedure, generally the first surgical treatment.

It is generally done in the teenage years, however, cane carried out at any age.

### **Pec Implants**

Implants to biceps, triceps, or pecs are a form of cosmetic procedure which creates muscular definition and fullness in the upper arm and chest area of the body.This is the extremely useful procedure for people who cant achieve toning in the upper arms even after extensive muscular conditioning.

### **Liposculpture**

Liposculpture was basically made to eliminate excess fatty lumps and improvise the shape of the body. Getting six pack abs quickly through liposuction are becoming increasingly popular today. High definition and advanced liposuction are helpful in removing the remaining excess fat from the abdominal region, especially. Fat is sucked out through the thin tube by making small incisions. The fat is sucked out with the help of special syringe or a mechanical pump from the operated areas. This procedure helps to easily extract the small pouches of stubborn residual fat after a weight-loss procedure has helped you lose excess fat. This procedure is used to carve the abdomen, to enhance its appearance to a muscular six-pack, in a single day instead of working out for years. This is ideal for addressing the remaining fat which is seen even after dieting and regular exercising.

This procedure helps to easily extract the small pouches of stubborn residual fat after a weight-loss procedure has helped you lose excess fat.

The areas where liposculpture is done are neck, arms, breasts, abdomen, flanks, thighs, and knees. Apart from these areas, there are other areas where liposculpture can be done.



## **Liposuction**

Liposuction is a type of surgery to remove or extract fat from specific areas of the body. It is different for liposculpture which involves reshaping and sculpting a specific part of the body by using multiple techniques. Liposuction is an extremely effective procedure on its own which eliminates the excess stubborn pockets of fats, or can be used with a combination with another procedure like abdominoplasty to upgrade the results.

## **Arms**



### **Biceps implants**

Bicep implants is a type of cosmetic surgery that makes the upper arm and chest area to gain additional mass/fullness and create proper muscular definition. This surgery is normally for those people who despite after heavy muscular conditioning, or injury, are unable to achieve the tone on their upper arms.



### **TriCeps Implant**

TriCeps implants is a type of cosmetic surgery that makes the upper arm and chest area to gain additional mass/fullness and create proper muscular definition. This surgery is normally for those people who despite after heavy muscular conditioning, or injury, are unable to achieve the tone on their upper arms.



### **Deltoid implant**

Deltoid implants is a type of cosmetic surgery that makes the upper arm and chest area to gain additional mass/fullness and create proper muscular definition. This surgery is normally for those people who despite after heavy muscular conditioning, or injury, are unable to achieve the tone on their upper arms.

## **Legs**



### **Calf implants**

Calf implants also referred to as calf augmentation it is a type of a procedure to alter the size or shape of the calf. People mostly are so upset over the size/shape of their calf muscles that they avoid any type of garment which exposes their legs. In such cases, even extensive exercise routine does not affect the calf muscle to grow which will match the large thigh muscle.

Calf implants may also be used to fix deformity which results through injuries or any type of nerve diseases that may cause muscle deterioration. Deformities comprise polio, club foot, spine Bifida. Calf implants can fix these areas by using solid, soft silicone implants.



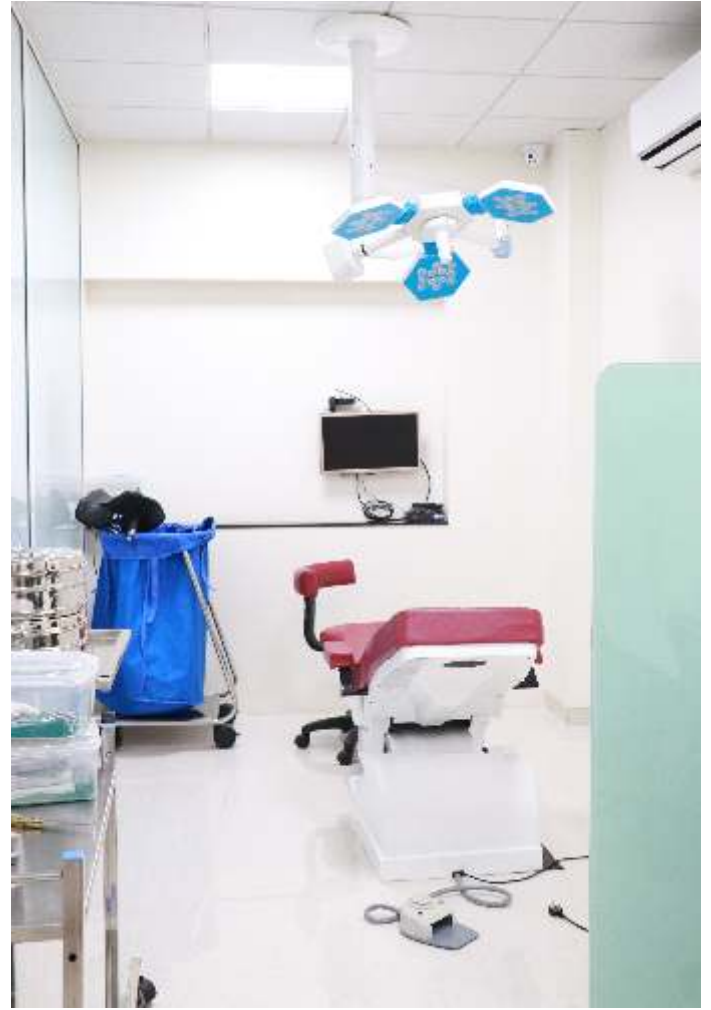
### **Fat Grafting**

Fat grafting is a cosmetic surgery, in this procedure, additional fat from one part of the body is harvested and injected in another part of the body to upgrade or restore the lost volume.

This procedure is effective and useful for people who even after heavy muscular conditioning or injury, fail to achieve a toned upper arm shape.



## ABOUT CLINIC



## HOW TO BOOK A SURGERY

- 01.** Plan your travel dates and check out doctor's availability and confirm your appointment.
- 02.** After bookings of your air tickets You need to send us a copy of your air tickets to us.
- 03.** We will plan Your consultation with your doctor accordingly and schedule your treatment.

You can call on the numbers given below for any assistance or query.

**Call : +91 070576 69340 | 73910 97831**

## HOW TO APPLY FOR A MEDICAL VISA ?

**Visa :** For the patients who are visiting India You need to follow below mentioned procedures :

- 01.** Apply for a Medical Visa with the Local Indian Embassy in your country
- 02.** Provide us a copy of your passport and traveling dates to us so that accordingly we can provide you An Invitation Letter for the Visa Application.

### Visa On Arrival :

Visit the following Link mentioned here : <https://indianvisaonline.gov.in/>

**Airport Pickup Facility :** We can arrange for a pickup from the airport and we can offer you places also where you can live comfortably. We will take care of every aspect involved in the process to make your medical trip convenient and comfortable.



## DHANWANTARI'S CHRYSALIS

Third Floor, Bhondve Corner, Ravet-D.Y. Patil College Road,  
Ravet, 412101 Pune, Maharashtra.

**CALL : 070576 69340 | 73910 97831**

[www.dhanwantarischrysalis.com](http://www.dhanwantarischrysalis.com) | Follow us on:   